

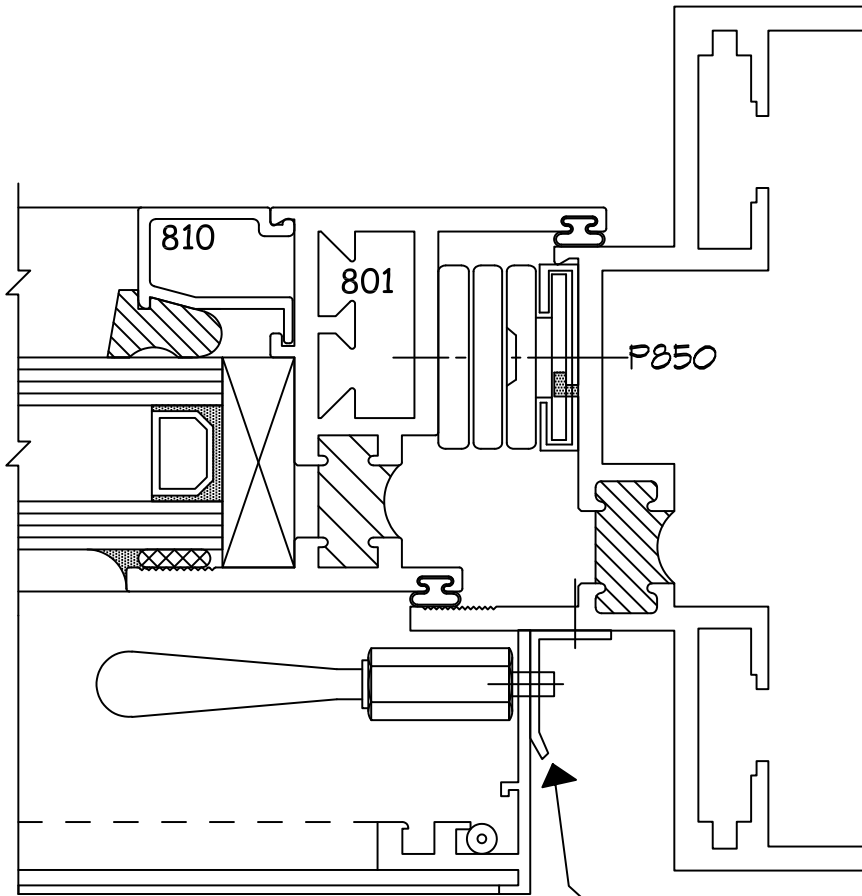
# Series 850 Sections



# Screen Project-In

Page No.  
**85F17**

Win-Vent Architectural Windows 2401 S. Main Street Fort Scott Kansas 66701  
(620) 223-1111 (800) 295-3113 Fax (620) 223-1139 www.winventwindows.com

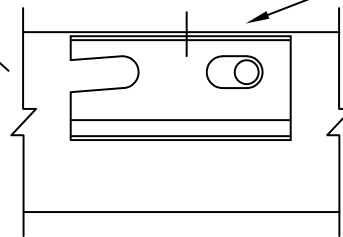


TO INSTALL EXTERIOR MOUNTED  
SCREENS:

- \* Attach brackets to pre-drilled holes
- \* Put screen frame thru vent & hang from top brackets
- \* Pull plunger in & insert in bracket slots

Exterior-mounted screens are removable from inside the window.

HOLES ARE PRE-DRILLED BY WIN-VENT. BRACKETS & ATTACHMENT SCREWS ARE SHIPPED LOOSE.



RIGHT SIDE VIEW  
OF BRACKET & PLUNGER