

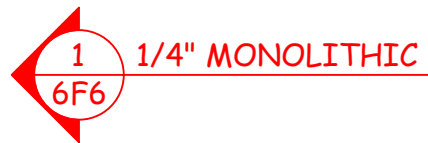
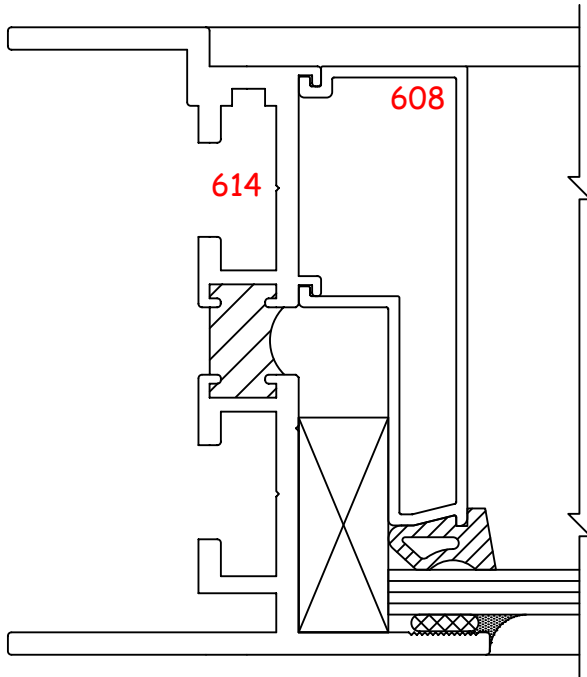
Series 600  
Sections



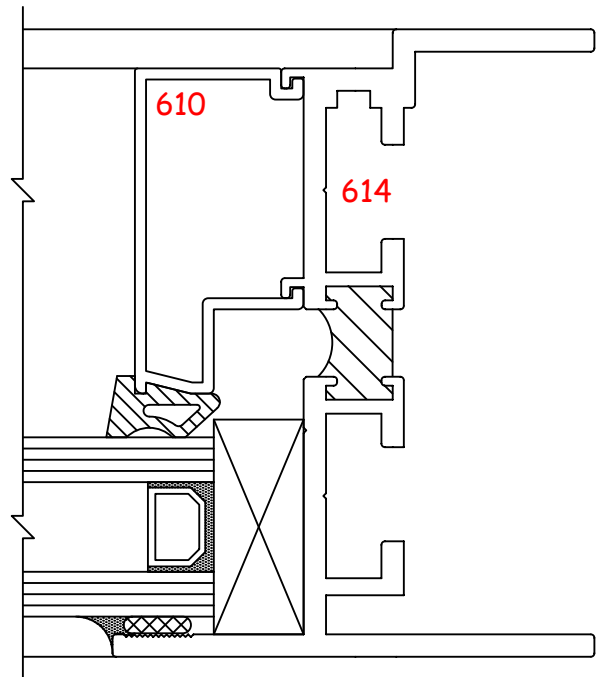
Glazing  
Options

Page No.  
**6F6**

Win-Vent Architectural Windows 2401 S. Main Street Fort Scott Kansas 66701  
(620) 223-1111 (800) 295-3113 Fax (620) 223-1139 www.winventwindows.com



1" INSULATED  
STANDARD  
NOTE:  
AS SHOWN ON  
ALL PREVIOUS PAGES



NOTE:

All glazing thicknesses between 1/4" & 2-1/2" are possible (except @ Dual Glazing).  
Win-Vent supplies setting blocks & neoprene gaskets. Glazing beads are factory  
notched around setting blocks where required. Glazing tape thickness is 1/8".